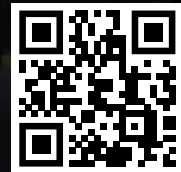


everdure
by heston blumenthal



LEARN MORE
Scan or visit
everdurebyheston.com

everdure
KILN



LEARN MORE
Scan or visit
everdure.com



everdure
by heston blumenthal

4K

Merging the rich history of charcoal cooking with precise technology and a modern design aesthetic, the 4K brings the authentic flavor of charcoal that humankind has enjoyed for millennia, to your home more efficiently than ever before.



Available in 3 colors:
Black, Graphite and Orange.

“From baking, roasting, grilling, and slow cooking to cooking over direct heat, there are so many intuitive perks in the 4K, that you’ll be finding new ways to cook for a very long time.”

4K

ELECTRIC IGNITION
CHARCOAL OUTDOOR OVEN



1 One-touch Fast Flame Ignition System™ with touch glass control



2 Airflow control system with numbered vents



3 Auto locking hood, press to open



4 Bluetooth™ app connectivity to monitor temperature



5 LED Digital control with timer function



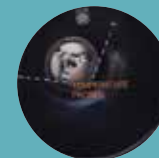
6 High hood for roasting / baking



7 Side hatch to reload charcoal (without disrupting internal temperature)



8 4 removable food probes



9 2 fixed ambient temperature probes

The ultimate outdoor cooking solution

- / Fast Flame Ignition System™ with touch glass control (1400W)
- / Integrated high temperature food and oven probes
- / Oven and food temperature display
- / 8.5oz stainless steel fluid cup
- / Bluetooth connected (iOS and Android)
- / Timer function
- / Fuel and wood chips side reloader
- / Flexibility to cook with hood up or down
- / Seamless die-cast aluminum outer body
- / Heat and UV protected paint finish
- / Versatility across cooking methods
- / Available in 3 contemporary colors
- / Oven can be used both on or off the stand
- / Cooking area: 220in²

K1

Unique airflow controls guarantees simple temperature control utilising both the bottom and top vents that are marked with numbers for a more responsive and balanced flow of air, allowing an impressive temperature range.



Available in Black.

“Uniquely designed to create a basic, authentic charcoal cooking experience, the K1 Kamado is simple and easy to use, making it suitable for both new and experienced grillers.”

K1 KAMADO

CHARCOAL OUTDOOR GRILL



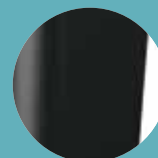
1 Analogue temperature gauge



2 Airflow control system with numbered vents



3 Storage drawer



4 Cool-to-touch exterior thanks to a double-walled insulation construction



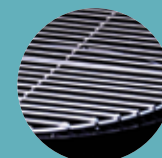
5 220in² cooking area



6 High hood for roasting / baking



7 Pizza stone



8 2 steel cooking surfaces



9 Grill can be used on or off the stand

The ultimate outdoor cooking solution

- / Cool-to-touch exterior & efficient insulation - double-walled heat insulated body
- / Wide cooking range from low and slow to baking
- / Multiple cooking styles from smoking, low and slow, roast, grill, sear or cook pizza
- / Storage drawer – storage space for your tools and accessories.
- / Analogue temperature gauge with cooking guide (displays Celsius & Fahrenheit)
- / 1 x chrome plated charcoal basket
- / 2 x 304 grade stainless steel grids with pivot for charcoal reloading
- / 1 x removable charcoal basket divider
- / Pizza stone
- / Die-cast aluminum body that is rust-proof and easy to clean
- / Oven can be used both on or off the stand
- / Cooking area: 220in²

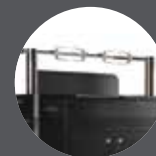
HUB II

The impressive power and cooking capabilities of the HUB, now enhanced with additional touch controls and premium finishings.



HUB II

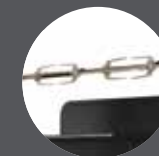
ELECTRIC IGNITION CHARCOAL
GRILL WITH ENHANCED CONTROL



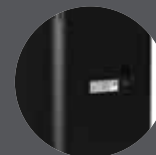
1 Rotiscope Technology™



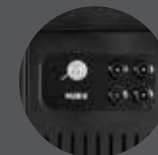
2 Retractable rotisserie poles with electronic height adjustment



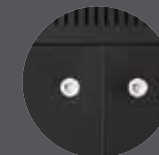
3 Rotisserie rod and 4 Cliplock Forks™



4 Integrated retractable power cord (4ft)



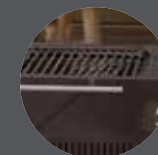
5 Fast Flame Ignition System™ with integrated 1400w electric element



6 Fully enclosed cupboard with shelf and double lined doors for storage or warming



7 Weather/wind shield



8 Porcelain enamel firebox and charcoal tray



9 Internal storage solution for rod and 4 Cliplock Forks™

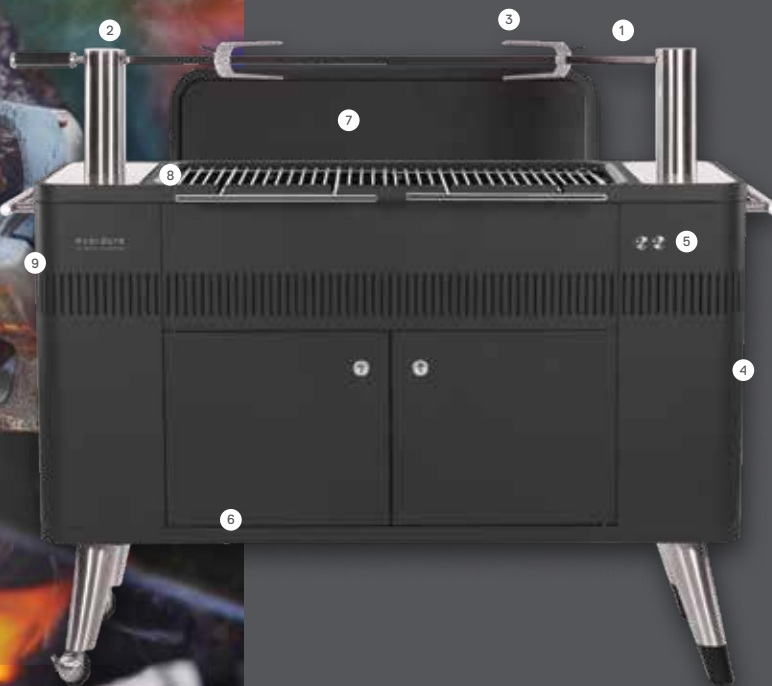
“The HUB II is designed with larger gatherings in mind, where you can really show off your skills. Flames. Embers. Heat. People are really drawn to the authentic charcoal experience”

The ultimate charcoal experience

- / Add charcoal and press one button to ignite
- / Charcoal ignited in 10 minutes, thanks to the Fast Flame Ignition System™
- / 90lb capacity rotisserie with Rotiscope Technology™
- / Two powerful electric rotisserie pole motors with infinite height adjustment
- / Elegant contemporary design with premium titanium finishings
- / Retractable cord 4ft
- / Large storage area behind 2 double-lined doors which doubles as a warming area
- / Porcelain enamel firebox
- / Chrome grills with cool-to-touch handles
- / Cooking area: 507in²

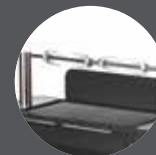
HUB™

Whether firing it up for simple steaks, trying something more ambitious, or going the whole hog with an epic rotisserie, the HUB™ is perfect for outdoor entertainers.

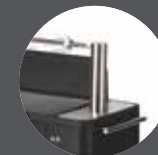


HUB™

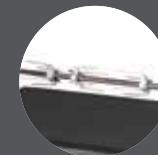
ELECTRIC IGNITION
CHARCOAL BARBEQUE



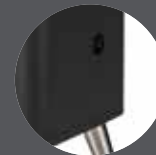
1 Rotiscope Technology™



2 One touch rotisserie pole system with multi-level manual height adjustment



3 Rotisserie rod and 4 Cliplock Forks™



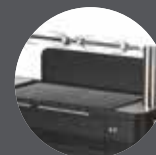
4 Integrated retractable power cord (4ft)



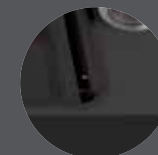
5 Fast Flame Ignition System™ with integrated 1400W electric element



6 Fully enclosed cupboard with shelf and double lined doors for storage or warming



7 Weather/wind shield



8 Porcelain enamel firebox and charcoal tray



9 Internal storage solution for rod and 4 Cliplock Forks™

“See, smell and taste, with the integrated rotisserie and an open barbequing experience, all your senses are stimulated.”

The ultimate charcoal experience

- / Add charcoal and press one button to ignite
- / Charcoal ignited in 10 minutes, thanks to the Fast Flame Ignition System™
- / 90lb capacity rotisserie with Rotiscope Technology™
- / One touch rotisserie pole system with multi-level manual height adjustment
- / Retractable cord 4ft
- / Large storage area behind 2 double-lined doors which doubles as a warming area
- / Porcelain enamel firebox
- / Chrome grills with cool-to-touch handles
- / Cooking area: 507in²

FUSION™

Whether you're new to cooking on charcoal, or a seasoned pro, you'll love the simplicity and style of the FUSION™. Named after its innovative fusion of charcoal and electricity, it draws on the benefits of both, delivering an unbeatable barbequeing experience.



FUSION™

ELECTRIC IGNITION CHARCOAL
BARBEQUE WITH PEDESTAL



1 Rotiscope
Technology™



2 Rotisserie rod & 2
Cliplock Forks™



3 Retractable
rotisserie poles with
adjustable heights
and internal motor



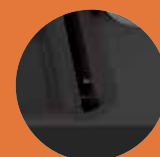
4 Fast Flame Ignition
System™ with
integrated 1400W
electric element



5 Integrated
retractable
power cord (4ft)



6 Weather/wind shield



7 Porcelain enamel
firebox and
charcoal tray



8 Hinged chrome grill
for easy reloading of
charcoal



9 Integrated storage
solution for rod and
2 Cliplock Forks™

“With a bold, yet slender design,
the first time your guests set
eyes on it, they’ll wonder what
it is. It won’t take you long to
win them over. 10 minutes
in fact.”

Charcoal cooking made simple

- / Add charcoal and press one button to ignite
- / Charcoal ignited in 10 minutes, thanks to the Fast Flame Ignition System™
- / 33lb capacity rotisserie with Rotiscope Technology™
- / Elegant contemporary design
- / Retractable cord 4ft
- / Porcelain enamel firebox
- / Hinged chrome grill for easy reloading of charcoal
- / Cooking area: 248in²

CUBE™ 360

Compact design with cool-to-touch carry handles and an ergonomic wooden top handle for easy travel. Enjoy grilling versatility with the height adjustable chrome grill rack by managing the distance from the charcoal.



Available in 1 color:
Black.

CUBE™360

PORTABLE CHARCOAL BARBEQUE
WITH ROASTING HOOD & 3PC TOOL KIT



1 Temperature gauge for cooking control



2 Ergonomic wooden handle



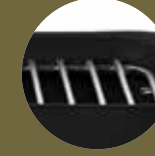
3 Top vent system to control air flow and heat



4 Cool-to-touch carry handles



5 Travel easy with safety latches



6 Height adjustable chrome grill



7 Built-in heat protection shield



8 Easy to clean interior

“Monitor heat with the temperature gauge on the roasting hood, and manage air flow and heat with the tip vent system.”

Charcoal cooking on the go

- / Easy to clean interior
- / Porcelain enamel firebox and charcoal tray
- / 2 cool-to-touch carry handles
- / Removable chrome grill
- / Built-in heat protection shield
- / 3 piece tool kit
- / Roasting hood, thermometer, airflow
- / Cooking area: 103.8 in²

CUBE™

Now you can enjoy authentic charcoal cooking on the go, without the mess. The portable, CUBE™ is designed for impromptu grilling away from home. With an integrated food-grade storage tray, preparation board and porcelain enamel firebox, it's easy to store, set up, cook and clean responsibly, while the chrome handles keep external heat to a minimum, making it easy to move while cooking.



Available in 4 colors:
Orange, Graphite, Khaki and Stone.

CUBE™

PORTABLE CHARCOAL GRILL



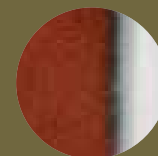
1 Integrated bamboo service tray – food grade



2 2 safety latches



3 Removable chrome grill rack



4 Porcelain enamel firebox and charcoal tray



5 Cool-to-touch carry handles



6 Integrated food grade storage tray



7 Built in heat protection shield



8 Easy to clean interior

“The whole range has been designed from the ground up, with a focus on helping you show off your skills in style, wherever your imagination takes you.”

Charcoal cooking on the go

- / Portable
- / Porcelain enamel firebox
- / Cool-to-touch handles
- / Removable charcoal tray
- / Simple, integrated unit and accessories
- / Two safety latches
- / Available in 4 stylish, contemporary colors
- / Cooking area: 103.8 in²



CUBE™ PROFLAME 360

The perfect grilling companion for wherever your next trip takes you.

Travel is safe and straightforward with the CUBE™ ProFlame 360's cool-to-touch handles and ergonomic wooden carry handle.



Available in 1 color:
Black.

CUBE™ PROFLAME 360

PORTABLE GAS BARBEQUE
WITH ROASTING HOOD



1 Temperature gauge for cooking control



2 Ergonomic wooden handle



3 Top vent system to control airflow and heat



4 Cool-to-touch carry handles



5 Travel easy with safety latches



6 Cast Iron Grill Plate



7 Stainless-Steel H burner

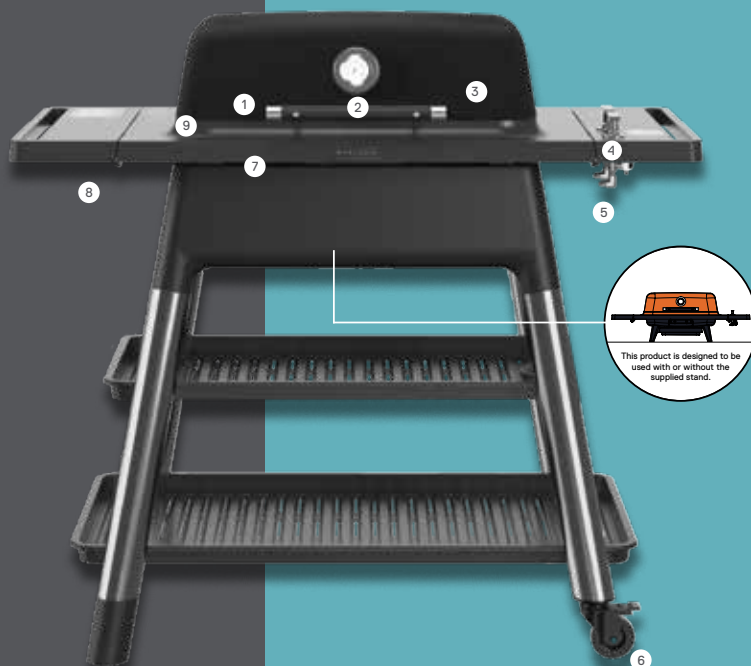
“Double sided cast iron grill plate and flame tamer to reduce flare ups, and easy to remove drip tray to easily dispose of excess grease and fat.”

Gas cooking on the go

- / Easy to remove drip tray
- / Single #304 Stainless-Steel H Burner
- / 2 cool-to-touch carry handles
- / #304 Stainless-Steel Flame Tamer
- / Black enamel firebox
- / Cast iron grill plate
- / Roasting hood with top vent, thermometer, wooden handle
- / Cooking area: 103.8 in²

FORCE™

A versatile gas grill that's simple to use, and easy to love. Available in a range of stylish colors, it looks at home in any backyard or on any balcony.



Available in 3 colors:
Matte Black, Matte Graphite and Matte Orange.

FORCE™

2ND GENERATION 2 BURNER GAS GRILL



1 Flexibility to cook with hood up or down



2 Temperature gauge



3 High hood for convection cooking



4 Super fast heat up with instant searing



5 Ergonomic taps with rotary ignition and variable heat control



6 2 Lockable castors for ease of use



7 Rust proof construction (complete die cast aluminum barbeque grill including side serveries)



8 Space saver with a drop down left servery



9 Matte vitreous cast iron grill plates with integrated flame tamers



“We can’t talk style, without mentioning color. Available in three contemporary shades, it makes it easy to match your barbeque grill to the color palette of the rest of your home.”

The stylish everyday gas grill

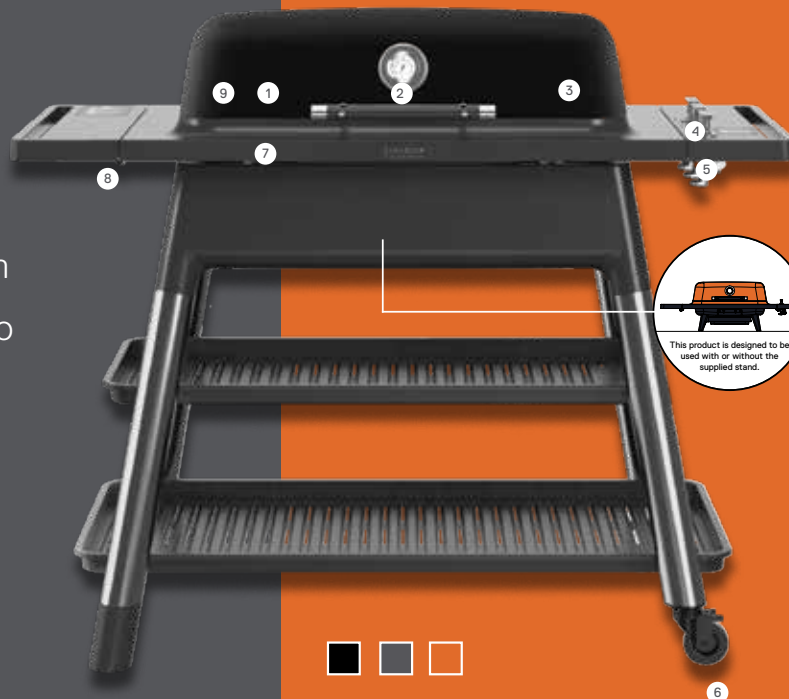
- / 2 independently controlled high performance burners
- / Instant searing – ready to cook in 5 minutes
- / Up to 22,000BTU of power
- / Variable flame control
- / Slender, ergonomically designed taps with rotary ignition
- / High hood for convection cooking (13lb turkey)
- / Flexibility to cook with hood up or down
- / Die-cast aluminum body and serveries to prevent rusting
- / Vitreous enamel coated grill plates for easy cleaning
- / Tapered legs for stability, can be removed from stand for portability
- / Available in 3 contemporary colors
- / Natural gas conversion kit available (HBGNGKUSV2)
- / Large 378.2in² cooking area



Gas Rotisserie Kit

FURNACE™

The ultimate gas grill that's the perfect union of power and grace. From sausages and roasts, to delicate scallops, it's got the muscle and versatility to handle all you throw at it.



Available in 3 colors:
Matte Black, Matte Graphite and Matte Orange.

FURNACE™

2ND GENERATION 3 BURNER GAS GRILL



1 Flexibility to cook with hood up or down



2 Temperature gauge



3 High hood for convection cooking



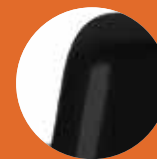
4 Super fast heat up with instant searing



5 Ergonomic taps with rotary ignition and variable heat control



6 2 Lockable castors for ease of use



7 Rust proof construction with die-cast aluminum grill including side shelves.



8 Space saving – drop down left shelf



9 Matte vitreous cast iron grill plates with integrated flame tamers



“The height and thickness of the hood makes it perfect for convection cooking. The heat will circulate 360 degrees inside, cooking the food and helping it absorb some delicious flavors.”

The ultimate gas grill

- / 3 independently controlled high performance burners
- / Instant searing – ready to cook in 5 minutes
- / Up to 27,000BTU of power
- / Variable flame control
- / Slender, ergonomically designed taps with rotary ignition
- / High hood for convection cooking (13lb turkey)
- / Flexibility to cook with hood up or down
- / Die-cast aluminum body and shelves to prevent rusting
- / Vitreous enamel coated grill plates for easy cleaning
- / Tapered legs for stability, can be removed from stand for portability
- / Available in 3 contemporary colors
- / Natural gas conversion kit available (HBGNGKUSV3)
- / Extra large 463.4in² cooking area



Gas Rotisserie Kit

MOBILE PREPARATION KITCHEN

Prepare your meal all on the one bench. Features chopping and serving boards, knife slots, spaces for condiments, herbs and even an ice compartment to keep your wine cool!



Available in 2 colors:
Matte Black and Matte Graphite.

The grill preparation essential

- / Food grade acacia wood cutting board surface
- / 2 pull out black bins to separate recyclable/trash from organic waste
- / Bins located directly underneath chopping boards, to allow you to 'Chop & Drag' food waste into bin
- / Storage cabinet with hanging hooks
- / Matte body finish
- / 4 lockable castor wheels
- / Brushed stainless steel handles
- / Pull-out drawer
- / Brushed stainless steel legs
- / Premium cover available



ACCESSORIES

GAS



FORCE™ Long Cover
HBG2COVER
/ FORCE™ gas barbeque with stand cover - long
/ 333D, UV protected material
/ Waterproof lining
/ Velcro straps
/ Suits: FORCE™



FURNACE™ Long Cover
HBG3COVER
/ FURNACE™ gas barbeque with stand cover - long
/ 333D, UV protected material
/ Waterproof lining
/ Velcro straps
/ Suits: FURNACE™



FORCE™ Rotisserie Kit
HBG2ROTISUS
/ Hi-temp PC steel
/ Large viewing window
/ Light
/ Removable parts for cleaning



FURNACE™ Rotisserie Kit
HBG3ROTISUS
/ Hi-temp PC steel
/ Large viewing window
/ Light
/ Removable parts for cleaning



FURNACE™ Flat Plate Centre
HBG3GRILLC
/ Matt vitreous cast iron flat plate
/ Centre flat plate
/ Finger access for easy changeover
/ Suits: FURNACE™



FORCE™ Grill Plate (Left/Right)
HBG2GRILL
/ Matt vitreous cast iron grill plate
/ Left or right orientation
/ Integrated flame tamer
/ Unique angled grill design for perfect searing
/ Finger access for easy changeover
/ Suits: FORCE™



FORCE™ Flat Plate (Left/Right)
HBG2PLATE
/ Matt vitreous cast iron flat plate
/ Left or right orientation
/ Finger access for easy changeover
/ Suits: FORCE™



FURNACE™ Grill Plate (Left/Right)
HBG3GRILLLR
/ Matt vitreous cast iron grill plate
/ Left or right orientation
/ Integrated flame tamer
/ Unique angled grill design for perfect searing
/ Finger access for easy changeover
/ Suits: FURNACE™



FURNACE™ Flat Plate (Left/Right)
HBG3PLATELR
/ Matt vitreous cast iron flat plate
/ Left or right orientation
/ Finger access for easy changeover
/ Suits: FURNACE™



FURNACE™ Grill Plate Centre
HBG3GRILLC
/ Matt vitreous cast iron grill plate
/ Integrated flame tamer
/ Unique angled grill design for perfect searing
/ Finger access for easy changeover
/ Suits: FURNACE™



CHARCOAL



4K Long Cover
HBC4COVERL
/ Long cover for 4K
/ 392D, UV protected material
/ Waterproof lining
/ Drawstring
/ Suits: 4K



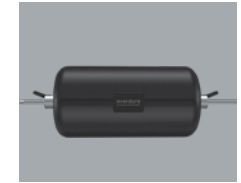
HUB & HUB II™ Long Cover
HBC2COVER
/ Long cover for HUB & HUB II™
Electric Ignition Charcoal Barbeque
/ 333D, UV protected material
/ Waterproof lining
/ Velcro straps
/ Suits: HUB & HUB II™



CUBE™ Carrier Bag
HBCUBEBAG
/ Premium carrier for CUBE™
Portable Charcoal Barbeque
/ Black canvas with brown PU
leather straps
/ Suits: CUBE™



Rotisserie Cage
HBCBASKETC
/ Suitable for HUB, HUB II, FUSION
or any BBQ with a 5/16 or 5/8
square rod
/ Chrome shelf, 3 heights, food grade
PVD coated body.
/ Patented design with Cliplock Forks™.



Rotisserie Tumbler
HBCBASKETO
/ Suitable for HUB, HUB II, FUSION
or any BBQ with a 5/16 or 5/8
square rod
/ Food grade, nonstick, PVD coated
body.
/ Patented design with Cliplock Forks™.

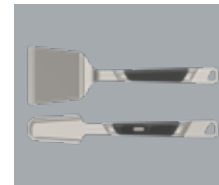
TOOLS



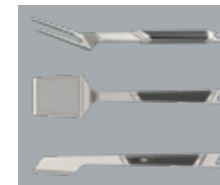
4K 'Half Moon Riser' Kit
HBCE4KGMRK
/ Multiple cooking zones for 4K
/ Includes: 1 x chrome riser, 1 x cast
iron flat plate, 1 x 304 stainless
steel flat plate, 1 x 304 stainless
steel grid



Mobile Prep Kitchen Long Cover
HBPKCOVERL
/ Long cover for mobile prep kitchen
/ 392D, UV protected material
/ Waterproof lining
/ Drawstring
/ Suits: Mobile Prep Kitchen



Medium Premium Toolkit
HBPREMKITM2
/ Brushed stainless steel
/ Premium build with soft grip
handle
/ Patented locking mechanism /
hang zone
/ Includes: 1 x medium spatula, 1 x
medium tongs



Large Premium Toolkit
HBPREMKITL3
/ Brushed stainless steel
/ Premium build with soft grip
handle
/ Patented locking mechanism /
hang zone
/ Includes: 1 x large spatula, 1 x large
fork, 1 x large tongs



Leather Gloves
HBGLOVESM / HBGLOVELX
/ Heat resistant
/ Black leather velcro fastening
/ 2 sizes: Small / Medium, Large /
Extra Large.
/ 1 pair



EVERDURE
KILN

KILN R SERIES

2 BURNER PIZZA OVEN

The KILN R Series propane pizza oven is uniquely designed to create an effortless and authentic experience at home. With its multifunctional capabilities, the KILN can cook a large pizza in under 2 minutes, as well as sear or bake a range of dishes.



“Featuring a rotating turntable and u-shaped burner, the KILN removes the need to manually turn your pizza and ensures an even cook every time.”



Available in 3 colors:
Graphite, Terracotta and Stone.

Traditional pizza with a new spin

- Cook the perfect pizza in under 2 minutes
- Heats up to 750°F in less than 15 minutes
- Use as a multi-functional oven to cook a range of other dishes
- Room to fit a large 16" pizza, or a range of bakeware & cookware
- Easy to clean body & internals, with removable stones
- U-shaped burner for even heat distribution when cooking
- Under-stone burner for the perfectly cooked base, every time
- Dual-insulation body, maximizing internal heat for energy efficiency
- Designed to fit common sized benchtops
- Up to 50-hours battery life for the turntable, or mains power
- Designed for convenient portability
- Button to operate turntable
- 7.45kW / 25450BTU 2-burner output

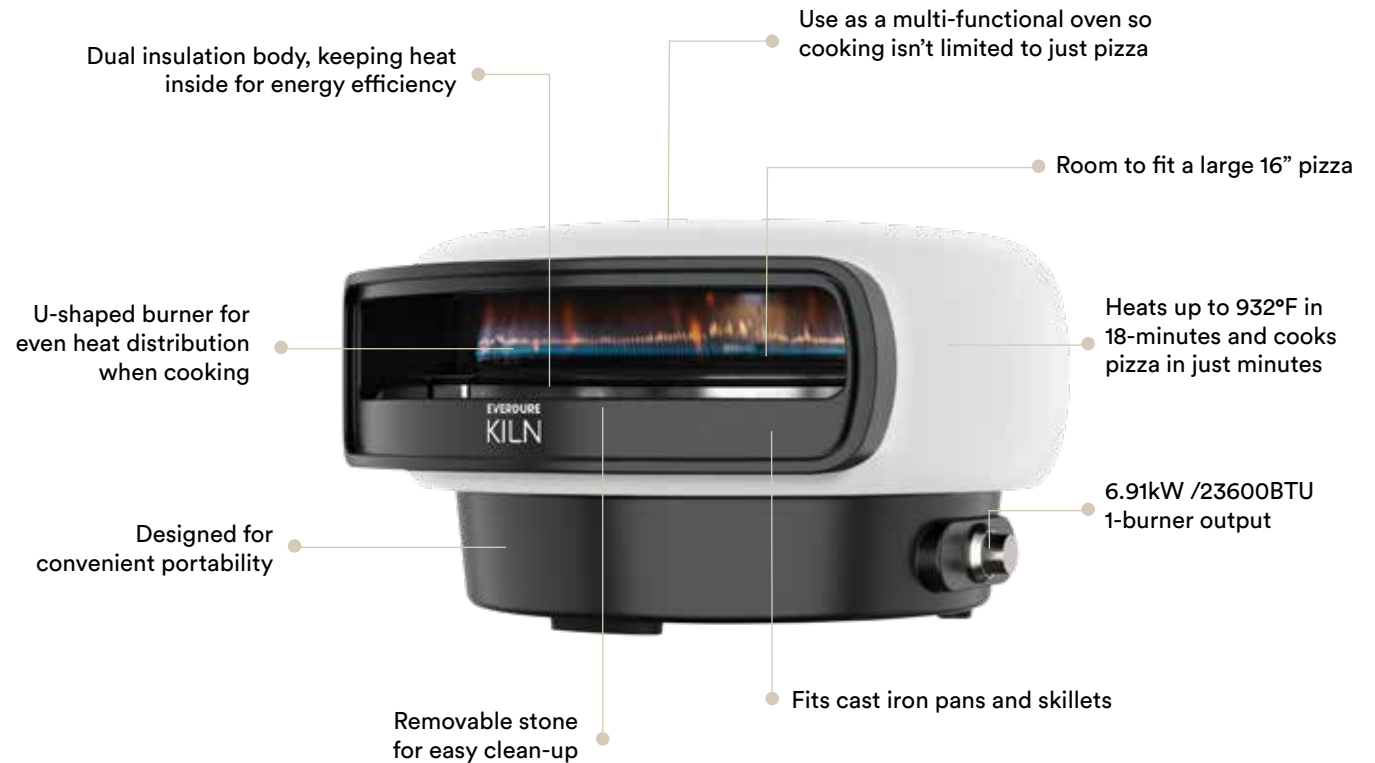
**Also available
in Natural Gas**

KILN S SERIES

1 BURNER PIZZA OVEN

With its multifunctional capabilities, the KILN can cook a large pizza in under 2 minutes, as well as sear or bake a range of dishes.

Easy to set-up, cook, clean and store, the KILN S Series is the perfect addition to your outdoor entertaining space.



“Featuring a u-shaped burner, the KILN only requires you to rotate your pizza, using a pizza peel or pizza turning peel, 4 times for an even cook and a crispy base.”

Traditional pizza made simple

- Cook the perfect pizza in under 2 minutes
- Heats up to 750°F in less than 20 minutes
- Use as a multi-functional oven to cook a range of other dishes
- Room to fit a large 16" pizza, or a range of bakeware & cookware
- Easy to clean body & internals, with removable stone
- U-shaped burner for even heat distribution when cooking
- Dual-insulation body, maximizing internal heat for energy efficiency
- Designed to fit common sized benchtops
- Designed for convenient portability
- 6.91kW / 23600BTU 1-burner output



Available in 3 colors:
Graphite, Terracotta and Stone.

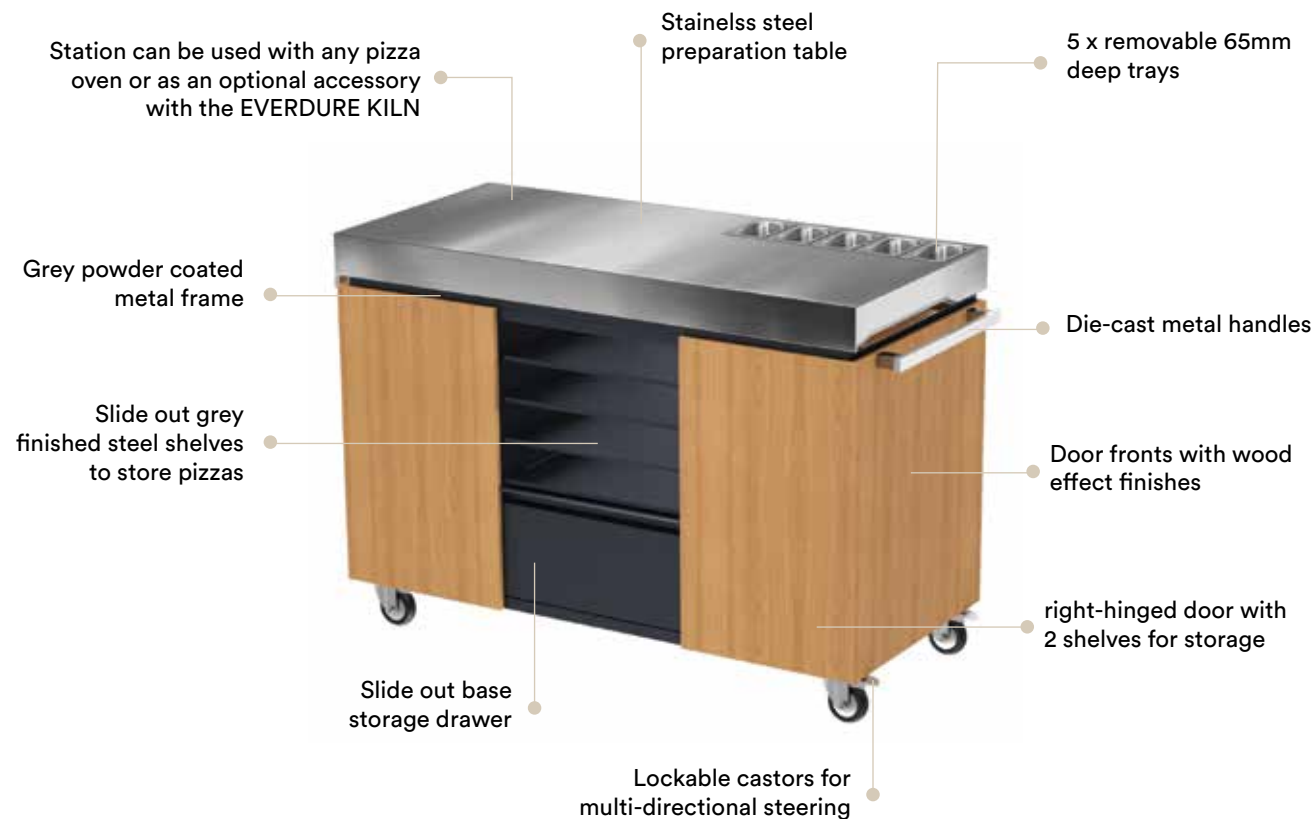


PIZZA STATION

THE ULTIMATE OUTDOOR PIZZA OVEN COMPANION - PREPARE AND COOK IN ONE PLACE

The Pizza Station is uniquely designed to bring your indoor preparation space outdoors.

It can be used with most portable pizza ovens, as a preparation station for the Everdure KILN, or as a standalone preparation station.



“With ample storage space, lockable castors for portability, and a modern, contemporary design, the pizza station is the perfect addition for your outdoor entertaining area.”

Traditional pizza with a new spin

- 5 removable trays for ingredients (65mm deep)
- Stainless-steel preparation table
- Durable door fronts with wood effect finishes
- Right-hinged door with 2 shelves for enclosed storage
- Left-hinged door for gas bottle storage
- Slide out grey finished steel shelves to store pizzas
- Slide out base storage drawer
- Lockable castors for multi-directional steering
- Grey powder coated metal frame
- Die-cast metal side-handles
- Can be used with most pizza ovens, with the Everdure KILN, or as a standalone preparation station
- Optional deluxe vinyl covers available for weather protection

ACCESSORIES



EPROCKER
Pizza Rocker



EPTURNPEEL
*Stainless Steel Pizza
Turning Peel*



EPCUTTER
Pizza Cutter Wheel



EPPEEL14
*Aluminum Perforated
Pizza Peel 14 Inch*



ETEMPGUN
*Infrared Temperature
Gun*



EPPREPSTAND
Pizza Station



EPBRUSH
Pizza Oven Brush



EPCOVER
Cover



EPSTANDCOVER
Pizza Station Cover



EPSTANDPIZZACVR
*Pizza Oven & Station
Cover*





everdure
by heston blumenthal

EVERDURE
KILN



@EverdurebyHestonBlumenthal



@EverdurebyHestonBlumenthal



@EverdureUSA



@EverdureOfficial

All images are for reference only, note due to product development product specification and images may differ.